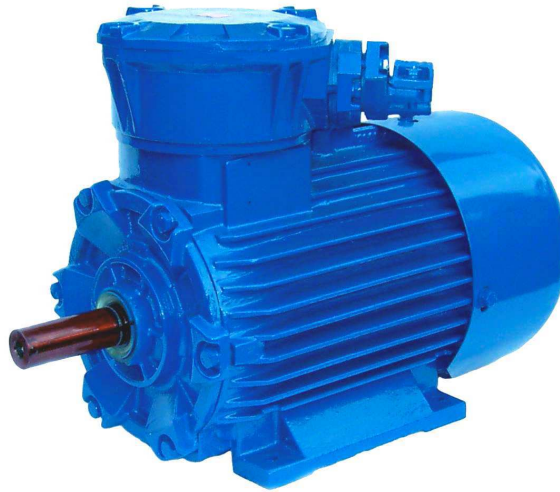


# EXPLOSION-PROOF ELECTRO-MOTORS TYPE dS(K,L)g



## General Characteristics:

Three-phase explosion-proof electro-motors with a short-circuit armature, type dS(K,L)g are determined to drive machines and devices, e.g. fans, pumps, grinders, hydraulic sets, conveyors etc. in gassy mines in areas with high explosion hazard of methane and coal dust. These motors can be used as a direct drive or in a configuration with a gear-box. The motor can be started with a direct switch-on or via soft-start. Concerning design, the motor are manufactured in three versions: butt-mounted, flange-mounted or butt-mounted with a flange. In the standard version the motors are delivered for voltage of 500V or 1000V, however on request the manufacturer also delivers motors for the voltage of 660V, eventually 1140V. As standard, the motors are equipped with thermal sensors in the winding and in bearings and on request they may be fitted with bimetallic or thermistor sensors, eventually with thermocouples. The connecting boxes are fitted with an end-component for monitoring of the ground-conductor integrity. The motors of the stated type are manufactured in the power line from 4kW up to 160kW, namely as 2-poles up to 8-poles.

The stated electro-motors have got the ES Certificate of ATEX Type test and they are approved by the state mining authority for use in gassy mines, in areas with high explosion hazard of methane and coal-dust.

## Marking of the Motors:

d	Sg SKg SLg	225 M	4 6A	-M
---	------------------	-------	---------	----

d – explosion-proof motor

Sg – butt-mounted

SKg – flange-mounted

SLg – butt-mounted with a flange

225 M – size see Table 1

4 – poles number and version

-M internal marking up-dated

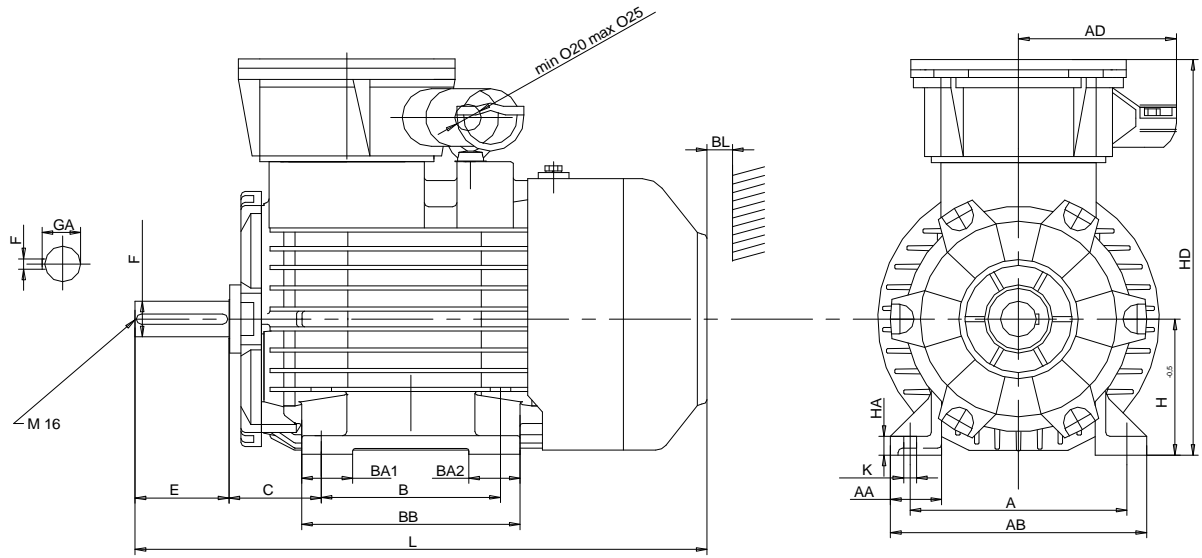
## Parameters of 4-poles Motors:

Size and poles number	Rated Output		Revolutions	Voltage		Efficiency	Output factor	Torsion moment
				500 V	1000 V			
	kW	KM	r.p.m.	A	A	%	-	Nm
160M4	11	15	1460	16,9	8,5	89,5	0,84	72
160L4	15	20	1450	22,4	11,2	90	0,86	98
180M4	18,5	25	1460	26,5	13,5	90,5	0,89	121
180L4	22	30	1468	31,5	15,5	91	0,89	143
200L4	30	40	1472	42,5	21,5	92,5	0,88	195
225S4	37	50	1475	52	26	93	0,88	240
225M4	45	60	1480	63	31,5	94	0,88	291
250M4	55	75	1483	75	37,5	93,5	0,91	355
280S4	75	100	1485	102	51	94,2	0,9	483
280M4	90	125	1485	120	60	94,4	0,92	580
315S4	110	150	1482	148	74	94,4	0,91	710
315M4A	132	180	1483	179	89	94,8	0,9	851
315M4B	160	217	1483	214	107	95	0,91	1032

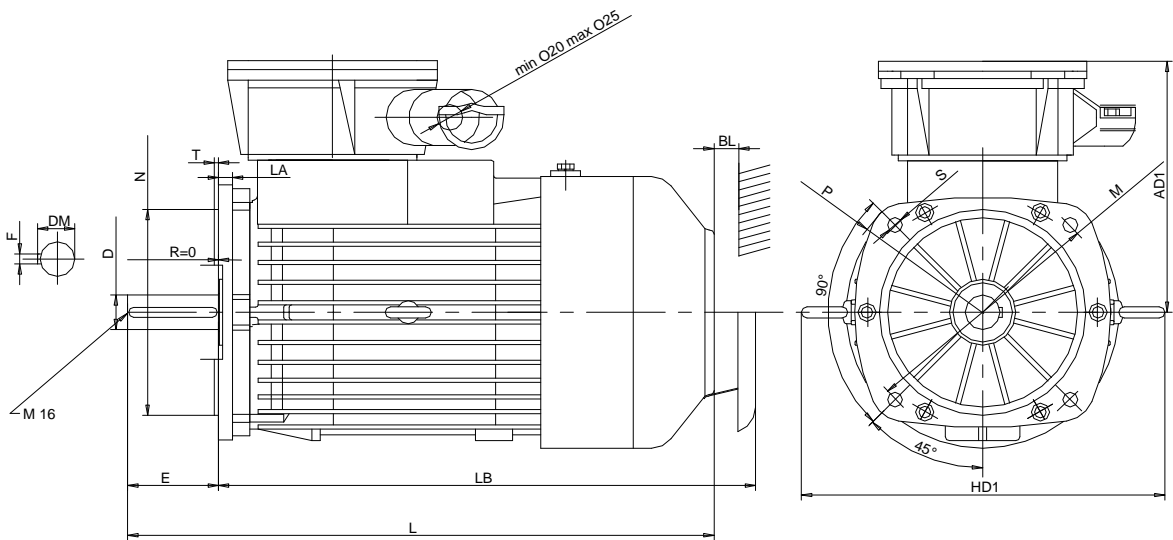
## Dimensions – Types 160 and 180:

Dimensions	A	B	C	DM	Free shaft end -sides N and P				H <sub>-0,5</sub>	HA	K	Flange						
					D <sub>k6</sub>	E	F <sub>h9</sub>	GA				LA	M <sub>+0,4</sub>	N <sub>js6</sub>	P	T	S	
																	∅	pc
160M	254	210	108	M16	42	110	12	45	160	22	15	17	300	250	350	5	18	4
160L	254	254	108	M16	42	110	12	45	160	22	15	17	300	250	350	5	18	4
180M	279	241	121	M16	48	110	14	51,5	180	22	15	18	300	250	350	5	18	4
180L	279	279	121	M16	48	110	14	51,5	180	22	15	18	300	250	350	5	18	4

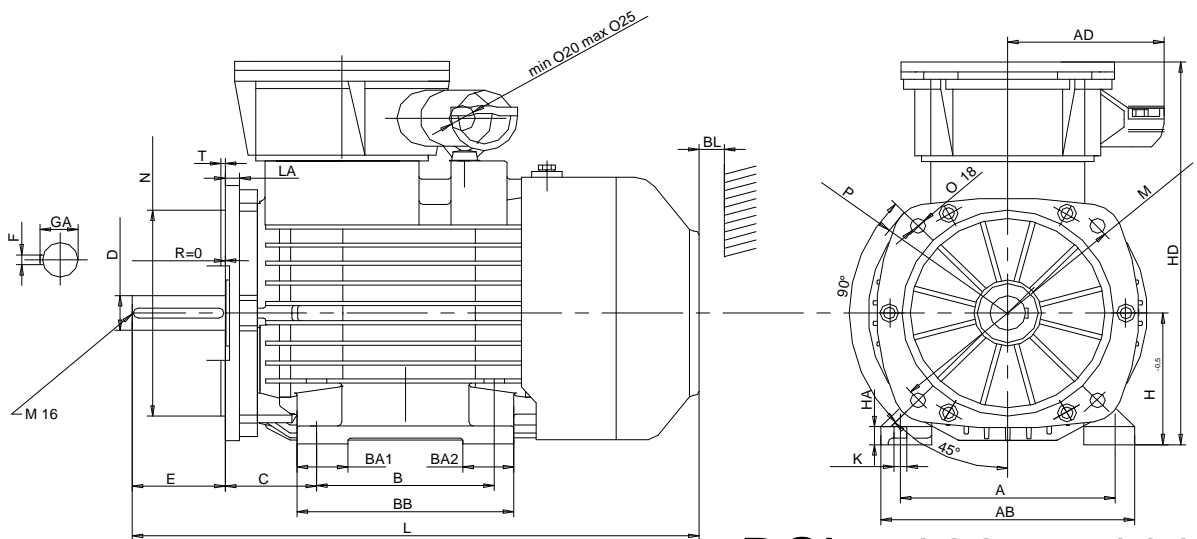
Dimensions	AA	AB	AC	AD	AD <sub>1</sub>	BA <sub>1</sub>	BA <sub>2</sub>	BB	BC	BL	HD	HD <sub>1</sub>	L	LB
160M	60	300	360	185	305	60	60	256	23	30	465	440	670	610
160L	60	300	360	185	305	60	60	300	23	30	465	440	710	650
180M	65	330	400	185	325	65	105	330	27	30	505	480	765	715
180L	65	330	400	185	325	65	105	330	27	30	505	480	765	715



**DSg 160 a DSg 180**



**DSKg 160 a 180**

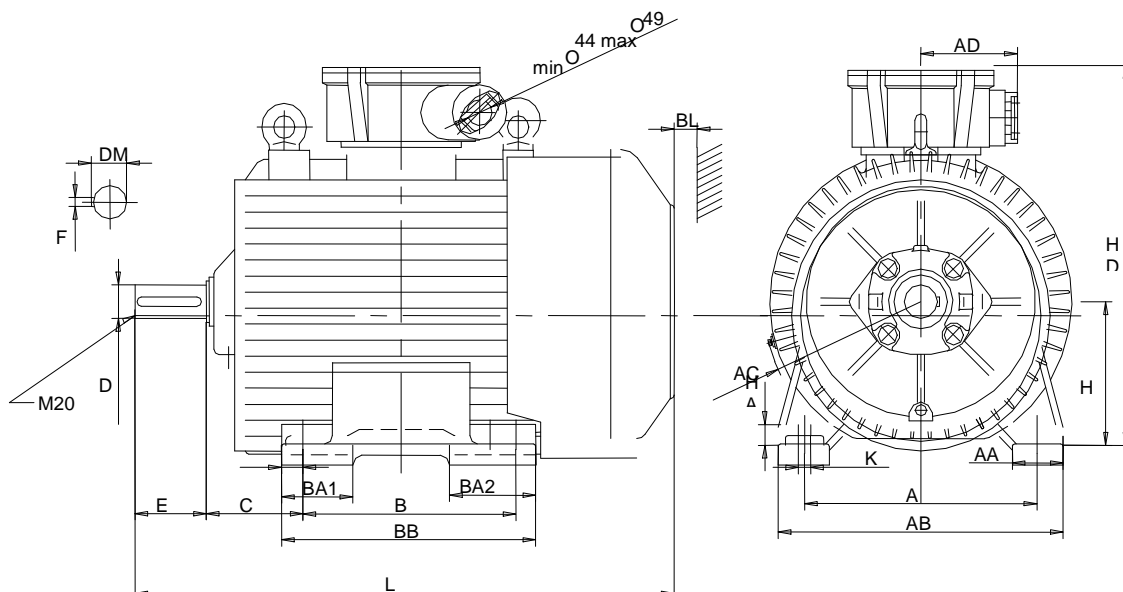


**DSLg 160 a 180**

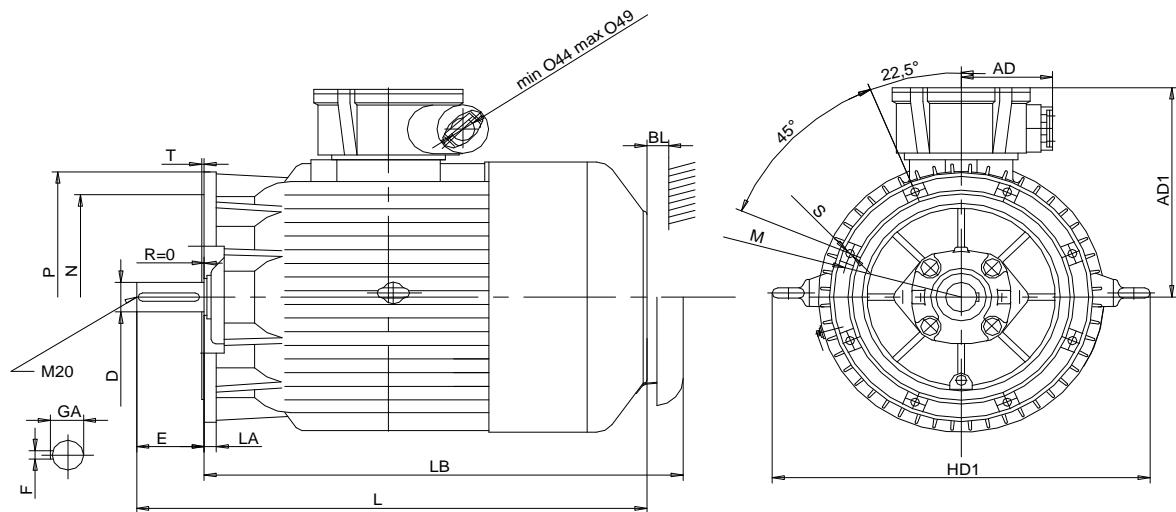
## Dimensions – Types 200-280:

Dimensions	A	B	C	DM	Free shaft end - sides N and P				H <sub>0,5</sub>	HA	K	Flange						
					D <sub>m6</sub>	E	F <sub>h9</sub>	GA				LA	M <sub>+0,4</sub>	N <sub>js6</sub>	P	T	S	
																	∅	pc
200L	318	305	133	M20	55	110	16	59	200	32	19	21	350	300	400	5	18	4
225S	356	286	149	M20	60	140	18	64	225	34	19	22	400	350	450	5	18	8
225M2	356	311	149	M20	55	110	16	59	225	34	19	22	400	350	450	5	18	8
225M4 - 8	356	311	149	M20	60	140	18	64	225	34	19	22	400	350	450	5	18	8
250M2	406	349	168	M20	60	140	18	64	250	36	24	24	500	450	550	5	18	8
250M4 - 8	406	349	168	M20	65	140	18	69	250	36	24	24	500	450	550	5	18	8
280S2	457	368	190	M20	65	140	18	69	280	40	24	25	500	450	550	5	18	8
280S4 - 8	457	368	190	M20	75	140	20	79,5	280	40	24	25	500	450	550	5	18	8
280M2	457	419	190	M20	65	140	18	69	280	40	24	25	500	450	550	5	18	8
280M4 - 8	457	419	190	M20	75	140	20	79,5	280	40	24	25	500	450	550	5	18	8

Dimensions	AA	AB	AC	AD	AD <sub>1</sub>	BA <sub>1</sub>	BA <sub>2</sub>	BB	BC	BL	HD	HD <sub>1</sub>	L	LB
200L2 - 8	80	400	465	190	390	105	105	388	44	30	590	560	810	770
225S4, 8	85	445	510	190	410	115	120	385	47	35	635	610	960	795
225M2	85	445	510	190	410	115	120	385	47	35	635	610	830	795
225M4 - 8	85	445	510	190	410	115	120	385	47	35	635	610	960	795
250M2	95	495	550	190	430	120	120	445	57	45	680	670	915	850
250M4 - 8	95	495	550	190	430	120	120	445	57	45	680	670	915	850
280S2	100	560	620	190	460	140	170	500	51	45	740	785	1060	995
280S4 - 8	100	560	620	190	460	140	170	500	51	45	740	785	1060	995
280M2	100	560	620	190	460	140	170	500	51	45	740	785	1060	995
280M4 - 8	100	560	620	190	460	140	170	500	51	45	740	785	1060	995



DSg 200 až 280



## DSKg 200 až 280

### Dimensions – Type 315:

#### dSKg 315 S 4÷8, M 4÷8-M

