

## Two-Speed Spur Gearboxes and Straight Bevel Gearboxes for Belt Conveyors with Medium Output Type EOPS 75


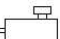
The gearboxes are dedicated for belt conveyors with medium output and transferred power up to 110 kW at nominal speed 1470 r.p.m.

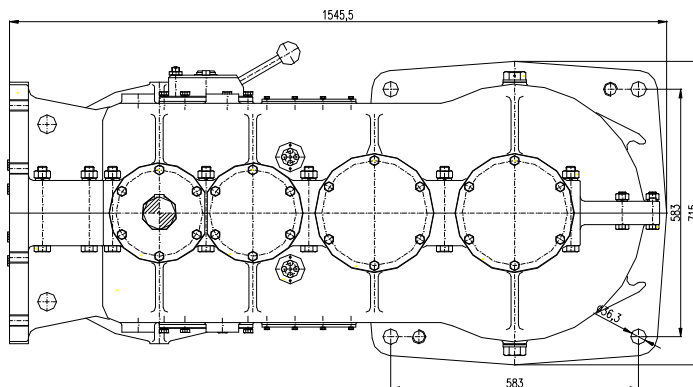
The advantage of these gearboxes is a simple transformation from the right-angle to the parallel version only by adding the angle transmission 1:1.

The gearbox has also an outlet for the brake wheel or for the equipment to prevent the reverse run.

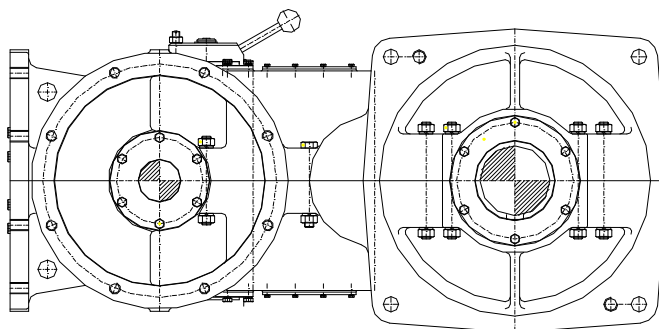
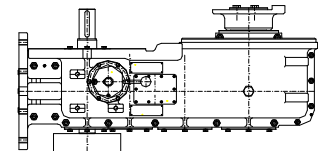
The gearboxes are manufactured in the explosion-proof version.

**Table of Transferred Power by Input Speed 1470 r.p.m.**

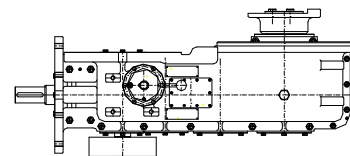
	Transferred Power in kW max. (valid for the both gear ratios)				Input and Output Shaft Design (Gear)	
	Gear Ratio i1	15,5 : 1	19,5 : 1	22,8 : 1		28,8 : 1
	Gear Ratio i2	19,5 : 1	22,8 : 1	28,8 : 1		39,0 : 1
 EOPS 75	110	90	75	75	Parallel (Spur)	
 EOPS 75 K	90	75	75	75	Right-Angel (Straight Bevel)	

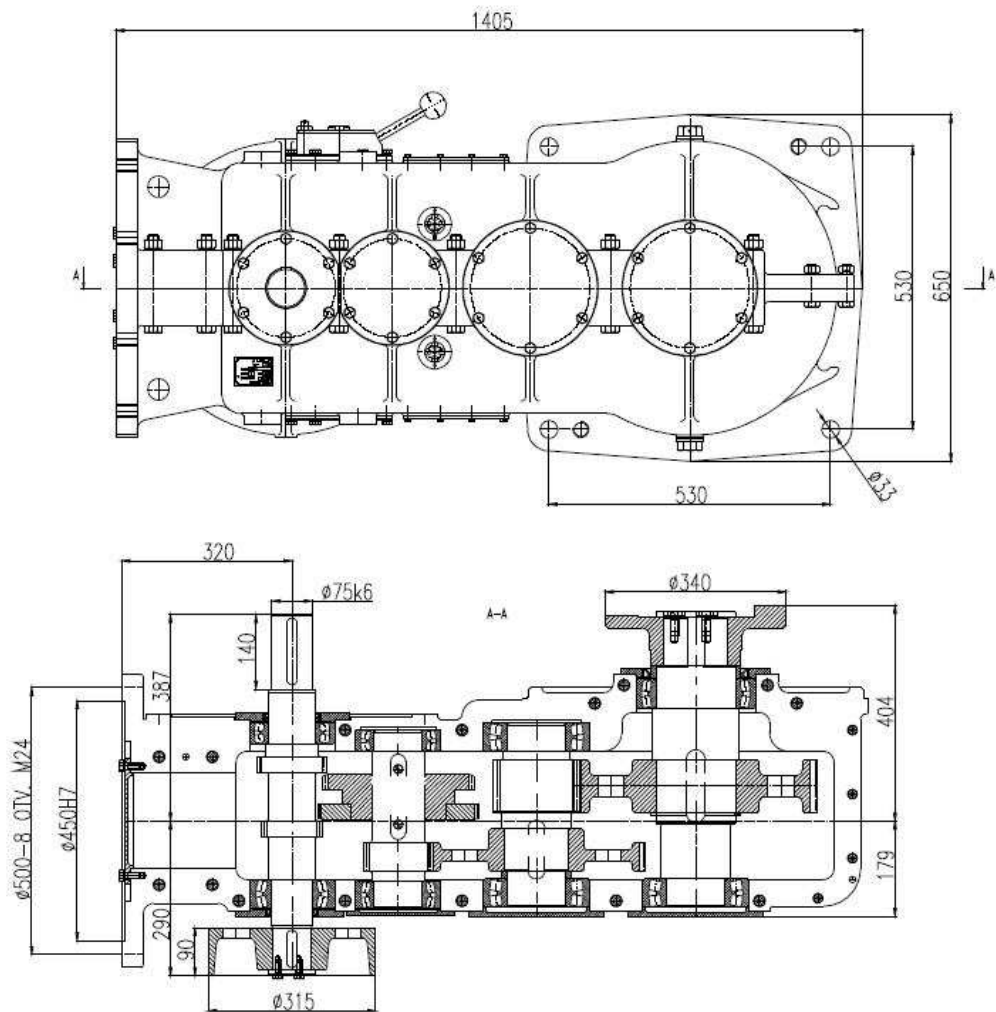


**EOPS 75**



**EOPS 75 K**





Theoretical Gear Ratio	Real Gear Ratio	Output Revolutions	Speed of Belt $v=m/s$ by the drum diameter		
		r.p.m.	500	630	800
15,5 : 1	15,5	94,84	2,48	3,13	3,97
19,5 : 1	19,5	75,38	1,97	2,49	3,16
22,9 : 1	22,88	64,25	1,68	2,12	2,69
28,8 : 1	28,82	51,01	1,33	1,68	2,14
39,0 : 1	39	37,69	0,99	1,24	1,58