

Two-Speed Straight Bevel Gearboxes For Heavy Belt Conveyors Type EOPS 132

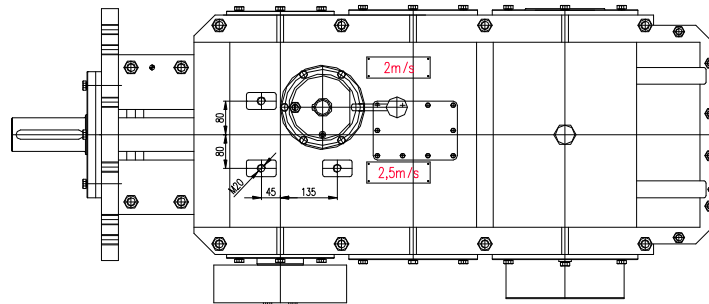
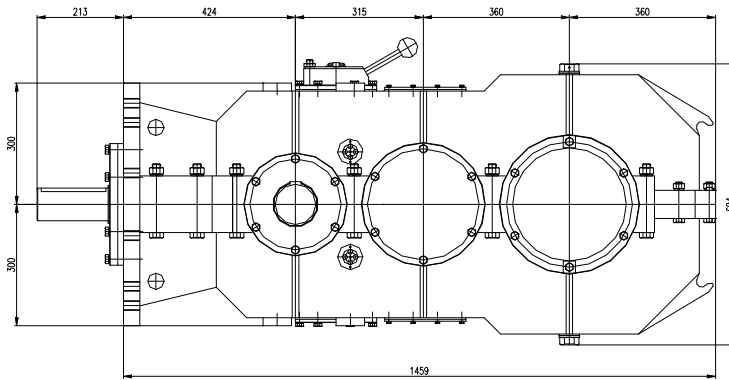
The gearboxes are dedicated for heavy belt conveyors with transferred power up to 132 kW at nominal speed 1470 r.p.m.

The gearbox has also an outlet for the brake wheel or for the equipment to prevent the reverse run.

The gearboxes are manufactured in the explosion-proof version.

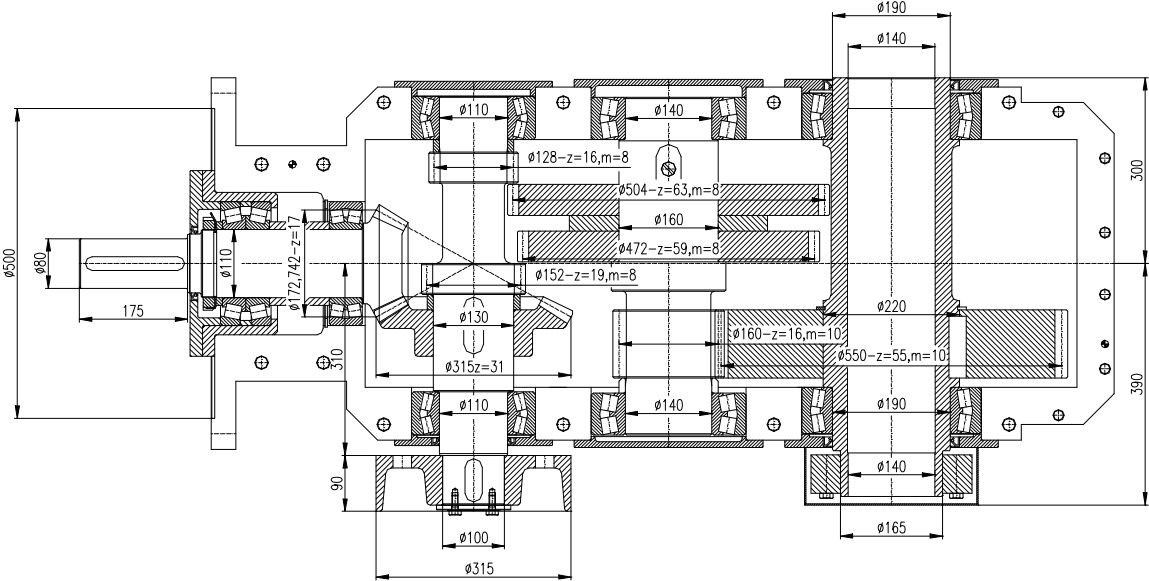
Table of Transferred Power by Input Speed 1470 r.p.m.

	Transferred Power in kW max. (valid for the both gear ratios)			
Gear Ratio i1	12,30 : 1	15,26 : 1	19,46 : 1	23,46 : 1
Gear Ratio i2	15,26 : 1	19,46 : 1	24,68 : 1	29,75 : 1
EOPS 132	132	132	132	110



Theoretical Gear Ratio		Output Revolutions r.p.m.	Speed of Belt v=m/s by the drum diameter				Real Gear Ratio
			500	630	800	1000	
12,30 : 1	12,30	119,51	3,13	3,94	5,00	6,25	12,30
15,26 : 1	15,26	96,33	2,52	3,18	4,03	5,04	15,26
19,46 : 1	19,46	75,54	1,98	2,49	3,16	3,95	19,46
24,68 : 1	24,68	59,56	1,56	1,96	2,49	3,12	24,68
23,46 : 1	23,46	62,66	1,64	2,07	2,62	3,28	23,46
29,75 : 1	29,75	49,41	1,29	1,63	2,07	2,59	29,75

Version with a Hollow Shaft



Version with a Clutch

