

Drag Wall Conveyor - Type DSS 260

The drag wall conveyor DSS 260 is determined for mining of medium-high coal-seams. The conveyor has the maximum output 1400 tons/hour by the output up to 4 x 250 kW. The slide shoe and E-profile are made of special material so that the working life of the conveyor could reach 2 million tons of transported coal.

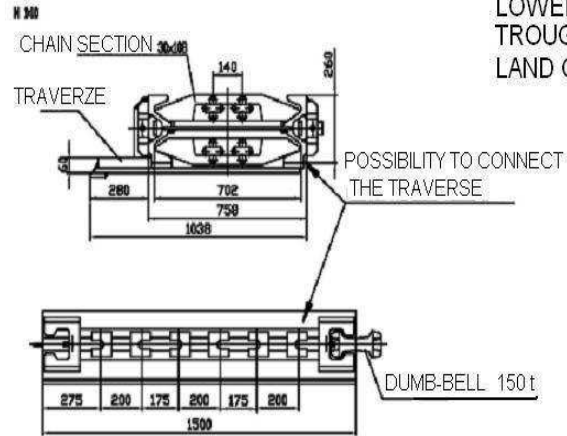
The conveyor has got a closed lower branch and every fifth conveying trough is inspection one.

The conveyor is equipped with the cave-in travel guidance "eicotrack". Further parameters of the conveyor are stated in the following table:

Type	DSS 260 SR 26-700-pl	DSS 260 SR 30-700-pl	DSS 260 SR 30-800-pl	DSS 260 SR 30-800-pl -zes
Trough width	754 mm		846 mm	
E-profile height	260 mm			
Conveyor length	max. 200 m	max. 250 m		
Conveyor max. output	1200 t/hour	1200 t/hour	1400 t/hour	1400 t/hour
Used drive max. output	4x 160kW or 3x 200kW			4x 250 kW
Used gear-boxes	Planetary gear-boxes - line 15 or 25 e.g. type PKPL 15, PSPL 15, PKPL 25, PSPL 25			PKPL 25, PSPL 25
Clutch type	Flexible double SPOK			
Motor (water-cooled)	160 or 200 kW			max. 250 kW
Chain belt speed	according to the gear-boxes and motors from 0,35 to 1,4 m/s			
Drag drum teeth number	7	6	6	7
Side discharging	Yes			
Used chain	26x92	30x108		
Spacing of chains	120 mm	140 mm		
Slide shoe thickness	30 - 34 mm			
Length of the troughs	1500 mm			
Lower branch closing	thickness 20 mm			
Troughs connection	connecting dumbbell 150 t, 300 t (for welded guidance)			
For slant without anchoring	± 15°			
For slant with anchoring	± 25°			
Used anchoring - upper	KH 260 P1			
Used anchoring - lower	KS 260 P1			

ACCORDING TO THE PLANETARY GEAR-BOX

CROSS-SECTION OF A LINE WITH A COVER LOWER BRANCH TROUGH WITH A WELDED-ON TRAVERZE



CROSS-SECTION OF A LINE WITH AN OPEN LOWER BRANCH TROUGH WITH A SCREWED-ON TRAVERSE LAND GUIDING

